



Curtin University

# ***2022 Domestic Admissions Guide***

**Bachelor of Medicine,  
Bachelor of Surgery**



**Make tomorrow better.**

[curtin.edu/medicine](http://curtin.edu/medicine)

# Table of contents



Medicine at Curtin .....	2	Special Entry Pathways.....	7
What Curtin has to offer .....	2	Rural entry pathway.....	7
Curtin Medical School (Medicine) Mission.....	2	Equity entry pathway.....	8
Medical Registration.....	3	Aboriginal and Torres Strait Islander entry pathway .....	8
Course structure overview .....	3	Assess you eligibility for different entry pathways.....	9
Clinical Placements .....	3	Application process .....	10
Course admission criteria .....	4	How to apply (Domestic applicants only) .....	10
Course Essentials.....	4	Selection process .....	11
Target applicants.....	4	Ranking for interview .....	11
Bonded medical places.....	4	The interview.....	11
Who can apply .....	5	Interview schedule.....	11
Entry Pathways .....	5	Ranking for an offer of a place .....	11
UCAT ANZ.....	6	Successful applicants.....	12
Special consideration applications.....	6	Location .....	12
Professional behaviour requirements .....	6	Accommodation .....	12
Inherent Requirements .....	6	Orientation .....	12
		Scholarships .....	12
		Mandatory Requirements .....	12
		Successful applicant checklist.....	12
		Key dates and deadlines.....	13

This publication is available in alternative formats on request.

## Disclaimer and copyright information

Information in this publication is correct as at April 2021 but may be subject to change. This material does not purport to constitute legal or professional advice. Curtin accepts no responsibility for and makes no representations, whether express or implied, as to the accuracy or reliability in any respect of any material in this publication. Except to the extent mandated otherwise by legislation, Curtin University does not accept responsibility for the consequences of any reliance which may be placed on this material by any person. Curtin will not be liable to you or to any other person for any loss or damage (including direct, consequential or economic loss or damage) however caused and whether by negligence or otherwise which may result directly or indirectly from the use of this publication.

## Copyright Curtin University

© Curtin University 2021. Except as permitted by the Copyright Act 1968, this material may not be reproduced, stored or transmitted without the permission of the copyright owner. All enquiries must be directed to Curtin University.

Published by the Faculty of Health Sciences Curtin University 2021.

For important updates to the information in this publication, please visit [curtin.edu/medicine](http://curtin.edu/medicine).

CRICOS Provider Code 00301J



# Medicine at Curtin

**Curtin Medical School (Medicine) offers the only direct-entry Bachelor of Medicine, Bachelor of Surgery (MBBS) in Western Australia.**



## What Curtin has to offer

Curtin recognises the complex issues facing the Western Australian health system, its workforce and the need for more doctors to be “generalists” in their orientation. This means we are committed to producing graduates who are better equipped to meet community needs, with primary care expertise, strong leadership skills and the ability to operate effectively in interprofessional care teams.

The overall aim of the Curtin Medical School (CMS) (Medicine) is to graduate doctors who are competent and ready to practise safely and effectively, with care and compassion for patients and their families. As a Curtin Medical School MBBS graduate, students will develop an understanding of medical and scientific knowledge; communication and clinical skills; skills as a health advocate; an awareness of ethical and professional responsibilities to patients; and strategies to cope with the challenges of medicine.

As a graduate of the course students will be well prepared to begin an internship and pursue further medical training in specialty fields.

The MBBS degree has an integrated curriculum requiring self-directed learning and draws on many disciplines to provide learning in a clinical context. From the first year of the program, CMS (Medicine) will offer clinical scenarios that provide the context for learning about the scientific foundations of medicine.

The Bachelor of Medicine, Bachelor of Surgery is accredited by the Australian Medical Council.

CMS (Medicine) delivers:

- A medical curriculum that emphasises primary care and prepares graduates to meet healthcare needs in Western Australia.
- Learning with other healthcare professionals and preparing for working in interprofessional teams.
- A concentration of clinical placements in the underserved south-east metropolitan corridor and regional Western Australia.
- The development of competencies in patient safety, quality of care and leadership.
- Learning about the translation of evidence into clinical practice and health improvement.
- Engagement with research teams in the Faculty of Health Sciences.
- Optional international student placements with partnered host institutions.

## Curtin Medical School (Medicine) Mission

With a strong emphasis on primary care, the mission of CMS (Medicine) is to position graduates well for rural and remote practice, as well as outer metropolitan locations, where there is a shortage of doctors.



## Medical Registration

All Curtin University medical students will obtain student registration with the Australian Health Practitioner Regulation Agency (AHPRA) which will be organised by the Faculty of Health Sciences for the duration of the course.

Upon completion of the medical degree, graduates are required to apply for graduate registration with the AHPRA. Graduate registration is required to undertake a 12 month internship which provides supervised clinical experience in an approved hospital.

Internships are separate from the medical degree and Curtin University does not determine internship placements. Further information regarding internships can be found on the Postgraduate Medical Council of Western Australia's website.

## Course structure overview

In the first year of the course, students undertake interprofessional units designed to promote collaborative practice and learning opportunities with other health sciences students. In addition, students are introduced to problem-based learning in discipline-specific units in medicine and participate in structured activities that take students into the community with a variety of health professionals.

The second and third years include intensive study of the structure and function of the human body in health and disease, using a problem-based learning approach. Students will continue to have opportunities to be exposed to a range of healthcare settings.

In the fourth year there is a transition from learning mainly on the University campus to learning in the clinical setting. Students will be offered a variety of clinical experiences including placements in outer metropolitan, rural and regional locations, in both community and hospital settings.

In the fifth and final year of study, students will work in clinical settings as members of the healthcare team. The training in the clinical settings will be in a range of different environments to prepare students for their internship.

The course is underpinned by four inter-related themes, integrated across the five years:

### Theme 1: Scientific Foundations of Medicine

Knowledge of the biological, clinical, epidemiological, social and behavioural sciences underpinning medicine and clinical practice, and evidence-based practice.

### Theme 2: Patient and Doctor: Clinical Practice

The clinical, procedural, and communication skills essential for clinical practice.

### Theme 3: Health and Illness in Society

Knowledge of health systems, and the cultural, socio-economic and physical environmental factors that contribute to health and illness, disease and treatment at the population level.

### Theme 4: Professional and Personal Development

Commitment to professional values and high-quality clinical practice, including ethics, law and working as a member of an interprofessional healthcare team; and understanding of the importance of maintaining personal wellbeing.

## Clinical placements

Students will have the opportunity to undertake clinical placements at St John of God Midland Public Hospital, Royal Perth Hospital, Fiona Stanley Hospital, Peel Health Campus and other hospitals, as well as general practice clinics across the state and rural medical settings.

There are a number of mandatory essential requirements that must be met before students can undertake clinical placements and other fieldwork activities. Read more about these requirements on Page 12.

# Course admission criteria

## DEGREE

Bachelor of Medicine, Bachelor of Surgery

## MINIMUM ATAR

95

## PREREQUISITES

Chemistry ATAR or equivalent  
OR

- International Baccalaureate Chemistry at HL /SL Grade 4.
- CHEM1003 Introduction to Chemistry and CHEM1005 Introduction to Biological Chemistry with a grade of 60 or higher in both units, offered through Curtin University.
- Completion of the Chemistry ATAR course with a final scaled score of 50 through North Lake Senior Campus or Cyril Jackson Senior Campus.

For queries regarding other equivalent subjects, please email [CMSFutureStudents@curtin.edu.au](mailto:CMSFutureStudents@curtin.edu.au)

## DESIRABLE

One of the following Mathematics ATAR courses: Mathematics Applications, Mathematics Methods, Mathematics Specialist, or equivalent.

## STAT

Not accepted

## UCAT<sup>1</sup>

Applicants are required to sit the UCAT ANZ

## ENGLISH LANGUAGE REQUIREMENTS

[study.curtin.edu.au/applying/english-language-requirements/courses-higher-english-criteria](http://study.curtin.edu.au/applying/english-language-requirements/courses-higher-english-criteria)

## INTAKE

February

## STUDY MODES

Full-time

## DURATION

5 years full-time

## LOCATION

Perth

## CURTIN ENABLING COURSE<sup>2</sup>

Not accepted

## Target applicants

The degree is primarily for Western Australian school leavers who have completed year 12 or equivalent and do not have a higher degree record<sup>3</sup>; with a small number of places for Western Australian non-school leavers (including Curtin course switchers and graduates). Places are



also available for non-Western Australian (interstate and overseas) candidates in the school-leaver and non-school leaver entry pathways.

Places will be prioritised for Western Australian candidates from rural and regional areas, Aboriginal and Torres Strait islander backgrounds and students who have experienced long-term educational disadvantage. These students will receive additional weighting in the admission process in recognition of the historic and current disadvantage experienced by people from these groups in accessing higher education.

Applicants who are interested in applying for the course but have limited access to IT facilities or the internet are encouraged to contact CMS (Medicine) directly via email at [cmsfuturestudents@curtin.edu.au](mailto:cmsfuturestudents@curtin.edu.au).

## Places in the course

In 2022 approximately 110 places will be available. Places not filled in the Rural, Equity or Aboriginal and Torres Strait islander pathways will be allocated according to CMS (Medicine)'s strategic priorities.

## Bonded medical places

The Bonded Medical Program aims to provide more Australian trained doctors where there are workforce shortages, particularly in rural and remote Australia.

Approximately 28 per cent of Commonwealth Supported Places in university medical programs across Australia are set aside for the Federal Government's Bonded Medical Places (BMP) scheme.

The scheme provides students<sup>4</sup> with a Commonwealth supported medical place at an Australian university in return for their commitment to work in regional, rural and remote areas for a specified period

at the completion of their training. This commitment is referred to as a Return of Service Obligation (RoSO). An area of medical need will be a district of workforce shortage as defined by the Australian Federal Government.

The Bonded Medical Program provides:

- a standard 3 year RoSO to be completed over an 18 year period
- a flexible approach in undertaking RoSO, where RoSO can be on a non-continuous basis, full-time or part-time work, and fly in/fly out work in eligible locations

Applicants should refer to official information about the Bonded Medical Program, as provided by the Australian Federal government.

Bonded Medical Places will be available in all MBBS entry pathways.

[health.gov.au/internet/main/publishing.nsf/Content/reformed-bonded-programs-resources](http://health.gov.au/internet/main/publishing.nsf/Content/reformed-bonded-programs-resources)

[ruralhealthwest.com.au/students/rurally-bonded-medical-students](http://ruralhealthwest.com.au/students/rurally-bonded-medical-students)

*Please note that the information contained in this guide is subject to change throughout the admission period. Applicants for the 2022 intake are encouraged to regularly check the following website for up-to-date information: [study.curtin.edu.au/application-requirements/medicine](http://study.curtin.edu.au/application-requirements/medicine).*

1. Aboriginal and Torres Strait applicants are not required to sit the UCAT ANZ.

2. With the exception of the Indigenous Pre-Medicine and Health Sciences Enabling Course.

3. School leavers who have participated in the Innovative Schools Scholars Program (or equivalent as determined by CMS (Medicine)) in Year 10 or Year 11 are exempted from the requirement not to have a higher degree record.

4. Eligibility is restricted to Australian citizens and Australian permanent visa holders residing in Australia. New Zealand citizens are not eligible for a Bonded Medical Place.





## Who can apply

Applicants for the MBBS degree must be Australian citizens, Australian permanent residents or New Zealand citizens and will fall under one of the categories defined below.

### 1. Western Australian (WA) applicants

are those who meet ONE or more of the following conditions:

- completed year 12 in Western Australia within the previous two years and possess a Western Australian Certificate of Education, or equivalent;
- are a resident of Western Australia in the year of application and have spent at least 183 days of that year in Western Australia.

### 2. Non-Western Australian (Non-WA)

**applicants** are those who do not meet any of the WA applicant conditions defined above.

All applicants will be required to meet the MBBS specific academic standards including competency in English, Chemistry ATAR or equivalent and sit the UCAT ANZ test, except where specified. Entry into this course is very competitive. Meeting the minimum entry requirements does not guarantee an interview or an offer in the course. All applicants must apply through TISC, except where specified.

Curtin University reserves the right to audit any applicant's residency status through the application process.

## Entry pathways

### School Leavers

School leavers are those who have successfully completed year 12 with a Western Australian Certificate of Education (WACE) or an equivalent senior secondary qualification and have an Australian Tertiary Admission Rank (ATAR), or equivalent and have not commenced post-secondary studies (AQF Diploma or above) and do not have a higher degree record from any Australian or overseas university. School leavers who have participated in the Innovative Schools Scholars Program

(or equivalent as determined by CMS (Medicine)) in Year 10 or Year 11 are exempted from the requirement not to have a higher degree record. Applicants are deemed to have a higher degree record if they have enrolled past a tertiary institution's census date for any given study period.

Mature age WACE applicants who want to study medicine as a school leaver are advised that they should study four ATAR courses in the one year. Applicants applying on the basis of fewer than four courses will not be considered for this course. Mature age WACE applicants must meet the school leaver criteria stipulated above. There is no upper age limit for school leavers or their year 12 qualification, provided all eligibility requirements are met.

### Non-school Leavers: Graduates

Non-school leavers (graduates) are applicants from any university (including Curtin University) who hold a completed tertiary degree record. Applicants who have completed multiple qualifications will have their full academic history assessed. No incomplete qualifications will be used to determine a notional ATAR. Applicants who do not hold a completed qualification or are not due to complete their current degree in the year prior to planned admission do not qualify under this pathway. The academic requirement for non-school leavers (graduates) is:

- A minimum notional ATAR of 92.

The table below provides a guide on the grade requirements for each level of completed qualification. Notional ATARs are an internal calculation only and will not be disclosed to applicants.

Qualifications	Grade
Bachelor Degree	Distinction Average
Graduate Diploma	Credit Average
Postgraduate Diploma	Credit Average
Master Degree	Awarded
Doctorate	Awarded

### Non-school Leavers: Curtin Course Switchers

A Curtin course switcher is an applicant who is enrolled in their first course of study at Curtin. They must not have a tertiary record from any other Australian or overseas university or have already completed a degree at Curtin.

Applicants must have completed or be on track to complete a minimum of 200 credits of study at Curtin at the end of the year preceding admission. Applicants must have a minimum of 200 credits remaining at the end of the year preceding admission.

Course switchers **MUST** commence the MBBS program in the first year of the course but may be eligible for some Credit for Recognised Learning. The academic requirement for Curtin course switchers is:

- A minimum course weighted average (CWA) of 80.

*1. Students who have transferred from Curtin University's Optometry stream to Flinders University's Bachelor of Science (Vision Science), are not eligible to apply as Curtin course switchers. They can however, apply for the Non-school Leaver (graduate) pathway on completion of the Flinders University course.*

*2. Students who have previously switched courses but otherwise meet these requirements will be able to apply as Curtin course switchers. In this case, the CWA will be calculated from all units completed.*



## UCAT ANZ

Applicants\* are required to sit the University Clinical Aptitude Test ANZ (UCAT ANZ).

Applicants will be ranked on the basis of their total UCAT ANZ score. No adjustments or consideration will be given by Curtin University to applicants for the UCAT ANZ test, applicants will need to contact Pearson Vue directly.

Applicants that require special testing conditions or are seeking test preparation materials are encouraged to visit the UCAT ANZ website for further information.

UCAT ANZ scores are valid only for the next available admissions year. Applicants should only complete the test in the year immediately preceding their planned year of admission. Applicants re-applying for the MBBS in a subsequent year must re-sit the UCAT ANZ.

**\*Aboriginal and Torres Strait Islander applicants are not required to sit the UCAT ANZ.**

[ucat.edu.au/ucat-anz/](http://ucat.edu.au/ucat-anz/)

## Special consideration applications

The special consideration process is administered centrally at Curtin University. CMS (Medicine) does not accept any applications for special consideration outside of the centrally approved process.

If approved, applicants will be granted between one and five additional ATAR points. The maximum adjusted ATAR will be 99.95, regardless of the number of points awarded or the original ATAR. This is a Curtin University process and does not alter any existing Tertiary Entrance Rank nor does it guarantee course entry.

All applications and supporting documentation are to be submitted through TISC via the Educational Access Scheme (EAS) process. For any enquiries please submit a webform on [students.connect.curtin.edu.au/app/ask\\_general](http://students.connect.curtin.edu.au/app/ask_general).

[study.curtin.edu.au/applying/special-consideration/](http://study.curtin.edu.au/applying/special-consideration/)

## Professional behaviour requirements

CMS (Medicine) students are expected to meet the professional behaviour standards of a medical student, and as they proceed through the MBBS course, the standards of a medical doctor. Student progression from each academic year to the next is subject to both academic performance and professional behaviour. It is possible that enrolment in the MBBS course can be terminated if professional behaviour is not satisfactory. It is important applicants read and understand the requirements before accepting a place at CMS (Medicine). Additional information is available from the link below.

[study.curtin.edu.au/application-requirements/medicine](http://study.curtin.edu.au/application-requirements/medicine)

## Inherent Requirements

Studying medicine places substantial demands on students. It is important applicants considering studying medicine familiarise themselves with the inherent requirements of the course, available from the link below. As part of their offer acceptance, successful applicants who receive an offer of a place will need to indicate their ability to meet the inherent requirements.

[study.curtin.edu.au/application-requirements/medicine](http://study.curtin.edu.au/application-requirements/medicine)

# Special Entry Pathways



## Rural entry pathway

### Eligibility Criteria

Up to 25 per cent of places are allocated to Western Australian applicants from a rural background. Rural applicants are those who, as of 31 December prior to the admission year, have spent at least 10 years cumulatively or any five years consecutively in an area with an Australian Statistical Geography Standard remoteness category (ASGS) RA 2-5 since the commencement of primary school (Year 1 onwards). The time frame is based on the location of an applicant's primary residence.

To be classified as a rural student, applicants must be Western Australian school leavers, Curtin course switchers or graduates.

Applicants who meet the Rural entry criteria will only compete for places with other eligible rural applicants. Entry via this pathway is competitive. Meeting the minimum entry requirements does not guarantee an offer for interview or a place in the course.

### Adjustment Schemes

Applicants eligible for a Rural place will receive up to a maximum of five additional adjustment points to their ATAR, course weighted average or Notional ATAR, through CMS (Medicine)'s Rural adjustment scheme or Curtin's StepUp bonus scheme (applicable to Western Australian school-leavers only).

Rural applicants will only be eligible to receive adjustment points from one scheme.

The maximum adjusted ATAR will be 99.95, regardless of the number of points awarded or the original ATAR. This is a Curtin University process and does not alter any existing Tertiary Entrance Rank nor does it guarantee course entry.

### Adjusted ATARs

Please note that any adjustment points from the CMS (Medicine)'s Rural entry adjustment scheme are only applicable for entry into the MBBS at Curtin University.

### Proof of Origin

Applicants will be required to submit documentation confirming their proof of rural background origin, to be completed by a recognised member of their community, confirming the applicant meets the criteria for this scheme.

Suitable persons to provide confirmation of rural eligibility include any APRHA licensed health practitioner such as: chiropractor, dentist, legal practitioner, medical practitioner, nurse, optometrist, pharmacist, physiotherapist or a person in one of the following categories: magistrate, minister of religion, school principal, Member of Parliament, police officer or veterinary surgeon.

Family members or a member of staff at Curtin University cannot complete the community confirmation declaration, even if they belong to one of the categories listed above.

### How to Apply

In addition to applying for the course via TISC, rural applicants must complete the Rural and Equity application form (link below) declaring proof of rural background origin, obtain confirmation of eligibility from a recognised member of their community and sign that their application is "true and complete".

Applicants must submit the original form by email directly to CMS (Medicine) by the published deadline.

The application form is available at: [study.curtin.edu.au/application-requirements/medicine](https://study.curtin.edu.au/application-requirements/medicine)





## Equity entry pathway

### Eligibility Criteria

Equity places will be available to Western Australian school leavers who are completing or have completed their entire year 12 study in a school with an Index of Community and Socio-Educational Advantage (ICSEA) score of 1,000 and below averaged over the last three years.

These schools are usually located in communities that have a high concentration of students from disadvantaged backgrounds with limited numbers of students accessing higher education. These communities are also the target areas for increasing the supply of general medical practitioners.

Equity places are also available for Western Australian school leavers who are classified as experiencing financial hardship (they are receiving Youth Allowance, or their parent or guardian is receiving a Commonwealth Income Support or Commonwealth Means-tested Assistance Payment).

Applicants who meet the Equity entry criteria will only compete for places with other eligible Equity applicants. Entry via this pathway is competitive. Meeting the minimum entry requirements does not guarantee an offer for interview or a place in the course.

### Adjustment Schemes

Applicants eligible for an Equity place will receive up to a maximum of five additional adjustment points to their ATAR, through either Curtin's StepUp Bonus Scheme or the CMS (Medicine)'s Equity adjustment scheme. Equity applicants will only be eligible to receive adjustment points from one scheme. The maximum adjusted ATAR will be 99.95, regardless of the number of points awarded or the original ATAR. This is a Curtin University process and does not alter any existing Tertiary Entrance Rank nor does it guarantee course entry.

### Adjusted ATARs

Please note that any adjustment points from the CMS (Medicine)'s Equity entry adjustment scheme are only applicable for entry into the MBBS at Curtin University.

### How to Apply

In addition to applying for the course via TISC, equity applicants must complete the Rural and Equity application form (link below) and submit the original by email directly to CMS (Medicine) by the published deadline.

The application form is available at: [study.curtin.edu.au/application-requirements/medicine](http://study.curtin.edu.au/application-requirements/medicine)

## Aboriginal and Torres Strait Islander entry pathway

### Eligibility Criteria

Places will be available to applicants of Aboriginal and Torres Strait Islander descent. Applying directly to CMS (Medicine), applicants are not required to submit a TISC application or sit the UCAT ANZ. Those applicants using the Indigenous Pre-medicine and Health Sciences Enabling Course as an entry pathway are required to successfully pass all units in the course.

All applicants will be required to obtain a Confirmation of Aboriginality prior to application. It is important that applicants begin the process of obtaining their Confirmation of Aboriginality immediately.

Find out more about the Indigenous Pre-medicine and Health Sciences Enabling Course at: [curtin.edu/bach-premed](http://curtin.edu/bach-premed)

### How To Apply

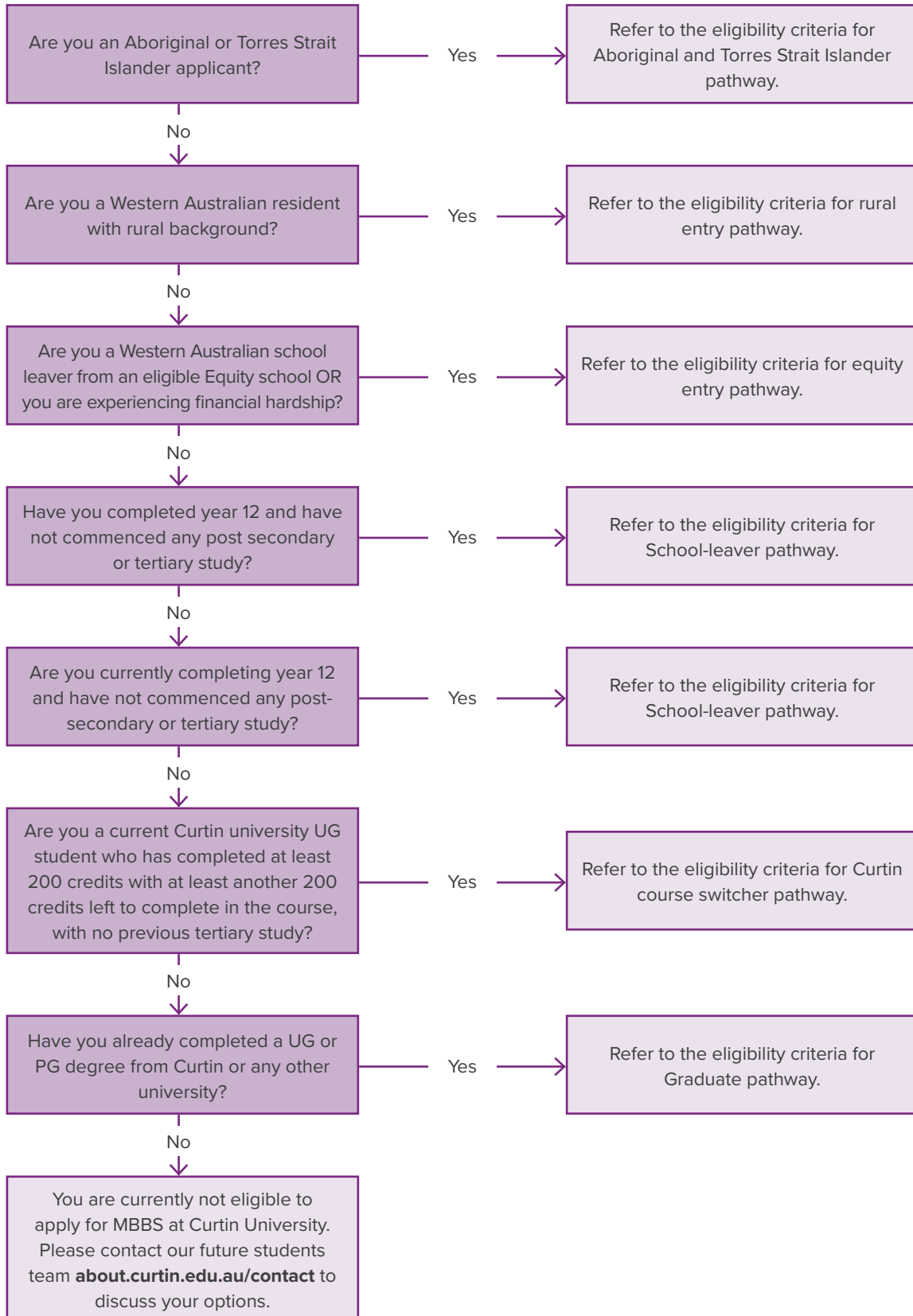
Applicants must submit the Aboriginal and Torres Strait Islander Entry form (link below) via email by the published deadline. This should include supporting documentation which demonstrates that they have the motivation and academic capability to succeed in the MBBS degree.

Interviews will be offered to competitive applicants.

The application form is available at: [study.curtin.edu.au/application-requirements/medicine](http://study.curtin.edu.au/application-requirements/medicine)

*Curtin University reserves the right to audit any application documentation submitted in support of rural, equity or Aboriginal and Torres Strait Islander entry to the MBBS course.*

# Assess your eligibility for different entry pathways





# Application process



## How to apply (Domestic applicants only)

### 1. UCAT ANZ Registration

All applicants (other than Aboriginal and Torres Strait Islanders) must register to sit the University Clinical Aptitude Test ANZ (UCAT ANZ) before the application closing date. The UCAT ANZ exam is held nationally during the months of July and August, in test centres across Australia and New Zealand as well as specified global locations.

Applicants are responsible for making their own arrangements to register for the UCAT ANZ. Please refer to the UCAT ANZ website, which explains the test in detail and sets out the procedures for registration including the fees payable, test centre procedures and regulations.

[ucat.edu.au/ucat-anz/](http://ucat.edu.au/ucat-anz/)

### 2. TISC Application

All applicants (including Curtin Course Switchers and graduates) are required to apply through the Tertiary Institutions Service Centre (TISC) with the exception of those applying for the Aboriginal and Torres Strait Islander pathway. Applicants are not required to specify their entry pathway on their TISC application, as this will be determined by CMS (Medicine) based on qualifications completed.

TISC receives and processes applications for undergraduate degrees on behalf of the

four public universities in Western Australia. The TISC application procedure allows applicants to list up to six courses in order of preference.

Applicants are advised to ensure their contact details as supplied to TISC are current as these are the details that will be used for all correspondence, including interview invitations, where applicable. It is the applicant's responsibility to ensure these details are kept up to date at all times through the selection process.

[tisc.edu.au](http://tisc.edu.au)

### Change of Preference

A change of preference includes changing the order of the existing preferences in the TISC application, as well as adding new preferences. This can be done by editing the application after it has been lodged on the TISC website.

Please note: **NEW** applications or preferences for the MBBS will NOT be considered after the closing date. Changes to the order of existing preferences, including the MBBS, must be done by the published deadline\*.

*\*Subject to TISC processing schedule – refer to TISC website*

### 3. Predicted ATAR

All school leaver applicants (both WA and non-WA) are required to provide the predicted ATAR form to their school principal to complete and return directly to

CMS (Medicine) by the published deadline. Completed forms must be emailed from the school principal or authorised school representatives' email address.

A copy of the form will be emailed to applicants upon submission of a TISC application. The form will be sent to the email address provided within the application, please ensure that the email address provided is one that is checked regularly.

Applicants are responsible for ensuring that their predicted ATAR form is submitted to CMS(Medicine) before the published deadline. In particular, WA school leaver applicants must submit their predicted ATAR form by the published deadline to ensure that they can be considered for an interview in November/December.

For the predicted ATAR form visit:  
[study.curtin.edu.au/application-requirements/medicine](http://study.curtin.edu.au/application-requirements/medicine)

### 4. Rural/Equity/Aboriginal and Torres Strait Islander Application Submission

Submit any special entry application by the published deadlines.

For the relevant forms visit:  
[study.curtin.edu.au/application-requirements/medicine](http://study.curtin.edu.au/application-requirements/medicine)

# Selection process

## Ranking for interview

Applicants are ranked and selected for interview based on the weighted sum of their academic merit score (ATAR or equivalent) and their UCAT ANZ score (out of 3600) in the ratio of 60:40. Please note this course is very competitive, with limited places available. Meeting the minimum requirements does not guarantee you an offer of an interview or a place in the course.

Only shortlisted applicants will be contacted for an offer of interview.

## The interview

The interview process provides an opportunity for shortlisted applicants to demonstrate how they communicate, critically appraise information and think about issues important to the medical profession.

The top ranked eligible applicants from each entry pathway will be invited to attend a Multiple Mini Interview (MMI). Applicants offered an interview will be able to select an interview time from a limited number of sessions on a first-come, first-served basis. During this time, applicants can cancel and reschedule within the offered session times. Interviews will only be available on dates published by CMS (Medicine). It is not possible to rearrange an interview to another date not previously published. All applicants should ensure they keep these dates free.

We are intending to run our normal process for interviews. These are primarily face to face but with online interviews available on request. We recognise that this year there will be more requests for online interviews as a consequence of the COVID-19 pandemic and associated travel restrictions. Note that the process followed is the same, irrespective of whether the interview is face to face or online.

Attendance at an interview is mandatory in order to remain eligible for an offer of a place. Attendance at an interview does not guarantee an offer of a place.

Applicants are advised to monitor the email address and phone numbers supplied to TISC as these are the details that will be used for all correspondence. It is the applicant's responsibility to ensure these details are kept up to date at all times throughout the selection process.



## Interview schedule

### November/December Round Interviews

Competitive and eligible Western Australian school leavers who have submitted a predicted ATAR form by the relevant deadline, Curtin course switchers and Western Australian non-school leavers will be invited to attend an interview. The predicted ATAR is used for Western Australian school leavers in this round, as the actual ATARs will not yet be available.

### January Round Interviews

Competitive and eligible non-WA school leavers and non-school leavers and those WA applicants whose actual ATAR renders them competitive will be invited to attend an interview at a later date. Actual ATARs are used for all school leavers in this round.

### Information for non-WA Applicants

Eligible non-WA school leavers and non-school leavers will be interviewed in the January round.

All applicants will undertake the same interview process, regardless of when they are interviewed. Applicants will not be disadvantaged in any way if they are interviewed at a later date.

## Ranking for an offer of a place

Applicants will be ranked for offer based on their academic merit score (actual ATAR or equivalent), their UCAT ANZ score and their interview performance.

Offers will be made directly via TISC. CMS (Medicine) may make direct offers to applicants after the TISC rounds until all places are filled.

Please note: personal statements, testimonials, character/school/ work references, awards and certificates do not make up any of the selection components and will not be considered. Applicants are asked not to submit these documents to the University.

## Deferral Requests

Deferral requests following an offer of a place in the MBBS course will only be considered in exceptional and unforeseen circumstances (for example, national service).

Applicants must submit a request for deferment of a place, along with supporting documentation, within five working days of the offer to [CMSFutureStudents@curtin.edu.au](mailto:CMSFutureStudents@curtin.edu.au)

Requests will be reviewed by the Dean of the Curtin Medical School and applicants will be advised of the outcome by email in due course.



# Successful applicants

## Location

Curtin Perth is located in Bentley, a busy suburb approximately 20 minutes from the CBD by car. The academic office of CMS (Medicine) is located on the main campus in a purpose-built building close to the six other schools of the Faculty of Health Sciences.

The first three years of the course are taught at Curtin Perth, with periodic visits to clinical sites. The final years of the curriculum will be undertaken in a variety of clinical placement sites, including outer-metropolitan and rural sites.

## Accommodation

Living on campus is a great way for students to get the most out of their university experience. It's convenient, safe and gives you the opportunity to make friends from all over the world.

CMS (Medicine) students are given priority at our on-campus accommodation and you may have the opportunity to live with students from your course. Our accommodation is fully furnished with electricity, gas and water included in your weekly rent. You'll be within walking distance to your classes and local amenities, and will benefit from 24 hour security and access to support services.

Due to high demand, we recommend that you apply for your accommodation when you apply to study at Curtin.

Please contact our Housing Advisory Service team directly for further information. They can also help you explore alternative accommodation options.

Please contact Housing directly to discuss available options.

[curtin.edu/accommodation](http://curtin.edu/accommodation)

## Orientation

A medicine pre-orientation program, followed by the University official orientation week will run prior to the commencement of Semester 1. Attendance is compulsory and applicants who accept a place in the course should plan around these dates accordingly.

## Scholarships

Scholarships are part of Curtin's commitment to rewarding academic excellence, supporting research and enabling students from all backgrounds to realise their potential. Scholarships are more than just financial support, they can enhance your portfolio of achievements.

Each scholarship has an information page which will outline the specific eligibility criteria. The criteria may be based on:

- Academic record (merit)
- Financial hardship and/or socioeconomic background
- Citizenship
- Course, faculty or interests
- You can use the scholarship search to find scholarships that meet specific criteria.

CMS (Medicine) offers scholarships to assist with relocation costs for commencing rural students as well as scholarships for rural students seeking assistance to sit the UCAT ANZ test. Additional information is available from the link below.

[scholarships.curtin.edu.au](http://scholarships.curtin.edu.au)

## Mandatory Requirements

All CMS (Medicine) owned units have compulsory fieldwork/clinical placements. During first year, students must complete various screenings and activities to ensure their safety and the safety of the general public are maintained during the placement. These include, but are not limited to:

- National Police Certificate
- First Aid Certificate ("Provide First Aid")
- Mental Health First Aid Certificate
- Working with Children Check (2nd year requirement)
- Hand hygiene training (online)
- Completion of stipulated health screening and immunisations including COVID-19 (some vaccinations require multiple inoculations over a period of time so students must plan their schedule accordingly).
- MBBS Student Declaration and Agreement
- Faculty Student Confidentiality Declaration

A First Aid Certificate training course will be offered as part of pre-orientation. A Mental Health First Aid Certificate training course will be arranged by the Curtin Association of Medical Students early in the semester. Students will be responsible for arranging their own re-certification in subsequent years of the course, in accordance with the renewal schedule as outlined in the relevant year handbook.

**Failure to provide evidence of compliance with these requirements will prevent students from attending fieldwork/clinical placements and as a result they will be unable to complete course requirements.**

Incidental fees are applicable for the majority of essential requirements listed above.

[students.curtin.edu.au/essentials/fees/](http://students.curtin.edu.au/essentials/fees/)

Students will be responsible for all costs associated with mandatory screening requirements for fieldwork/clinical placements, including vaccination and screening costs.

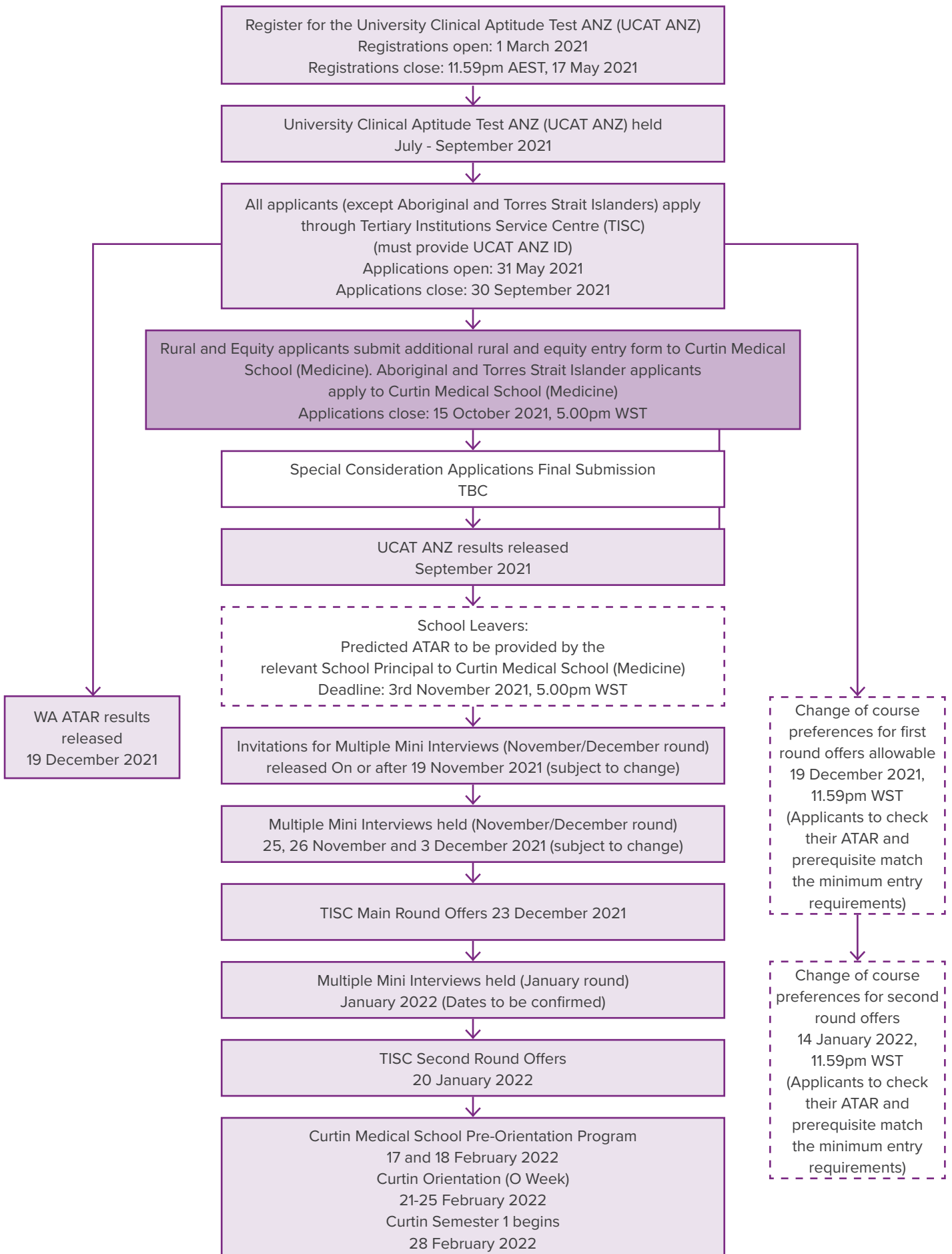
[curtin.edu/healthfieldwork](http://curtin.edu/healthfieldwork)

## SUCCESSFUL APPLICANT CHECKLIST

- Accept your offer.
- Complete your enrolment in Get Started!
- Start working towards attaining the various mandatory requirements, some of which are due in the third week of Semester 1.
- Arrange housing and familiarise yourself with transportation options.
- Arrange to attend the medicine pre-orientation program and orientation week.

More information will be available in the welcome pack and the CMS (Medicine) Year 1 Student Handbook which will be emailed to you after you have accepted your offer.

# Key dates and deadlines







## CONTACT US

Tel: 1300 222 888

Web: [study.curtin.edu.au](http://study.curtin.edu.au)

**Curtin University**

Bentley

Kent Street Bentley WA 6102

GPO Box U1987 Perth WA 6845



For further information please visit:  
[curtin.edu/medicine](http://curtin.edu/medicine)